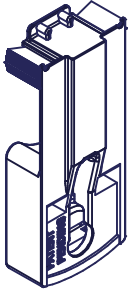


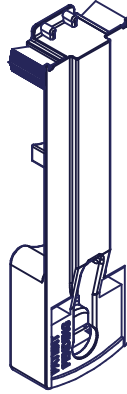
# CONSTANT FORCE

## 979 SERIES - INVERTED UNIVERSAL STANDARD RACKING



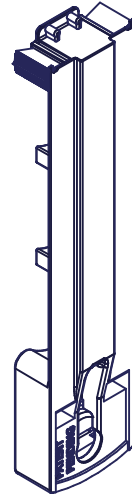
808010

INVERTED UNIVERSAL SINGLE SUPPORT



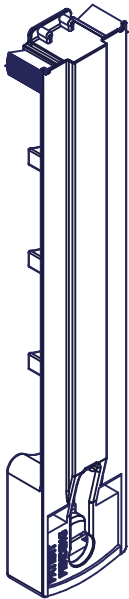
808020

INVERTED UNIVERSAL DUAL SUPPORT



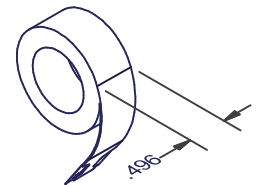
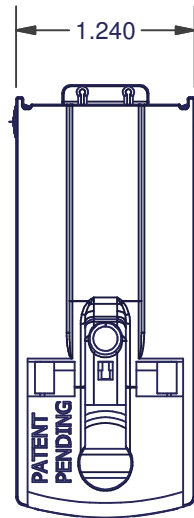
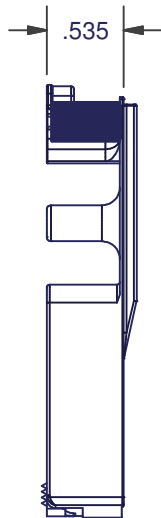
808030

INVERTED UNIVERSAL TRIPLE SUPPORT



808040

INVERTED UNIVERSAL QUAD SUPPORT



UNIVERSAL COIL

DIMENSIONS ARE FOR REFERENCE ONLY AND ARE IN INCHES UNLESS OTHERWISE NOTED.  
 CONTACT OUR ENGINEERING DEPARTMENT WITH SPECIFIC APPLICATION QUESTIONS OR REQUIREMENTS.  
 NOT ALL COMBINATIONS LISTED ARE CURRENTLY STOCKED, EXTRA LEAD TIME MAY BE REQUIRED.