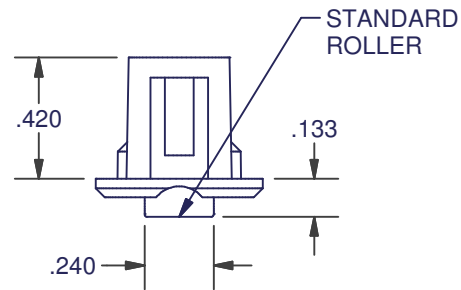
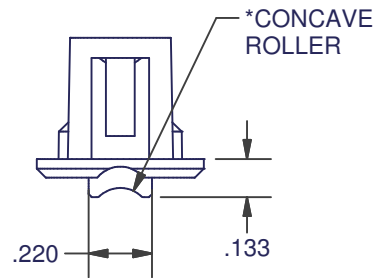
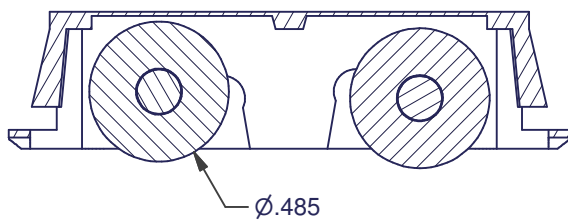
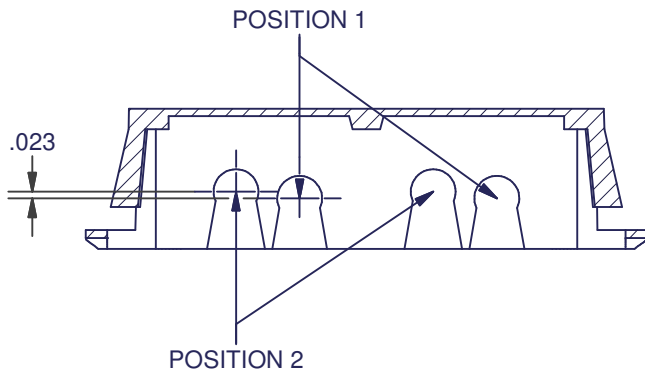
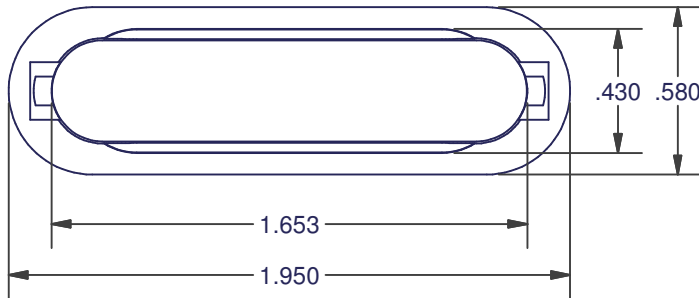
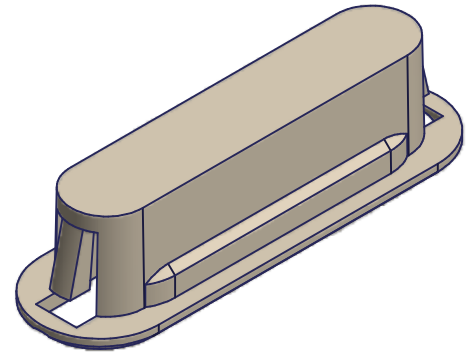


WINDOW ROLLERS

4238

- ASSEMBLED WITH ONE OR TWO ROLLERS
- DEFAULT LOCATION OF A SINGLE ROLLER IS TOWARD THE CENTER PLEASE SPECIFY OTHERWISE



AMESBURY ITEM #	REFERENCE ITEM #	ROLLER QTY	ROLLER POSITION	MATERIAL		
				HOUSING	ROLLER	AXLE
400219	4238-1000-1-1	1	1	15% GF NYLON	CELCON	STAINLESS STEEL
400220	4238-1000-1-2	1	2	15% GF NYLON	CELCON	STAINLESS STEEL
400157	4238-1000-2-1	2	1	15% GF NYLON	CELCON	STAINLESS STEEL
400221	4238-1000-2-2	2	2	15% GF NYLON	CELCON	STAINLESS STEEL
400367	*4238-4000-2-1	2	1	15% GF NYLON	CELCON CONCAVE	STAINLESS STEEL
400368	*4238-4000-2-2	2	2	15% GF NYLON	CELCON CONCAVE	STAINLESS STEEL

DIMENSIONS ARE FOR REFERENCE ONLY AND ARE IN INCHES UNLESS OTHERWISE NOTED.
CONTACT OUR ENGINEERING DEPARTMENT WITH SPECIFIC APPLICATION QUESTIONS OR REQUIREMENTS.
NOT ALL COMBINATIONS LISTED ARE CURRENTLY STOCKED, EXTRA LEAD TIME MAY BE REQUIRED.